

# *European General Practice Research Network*

Eva Hummers-Pradier

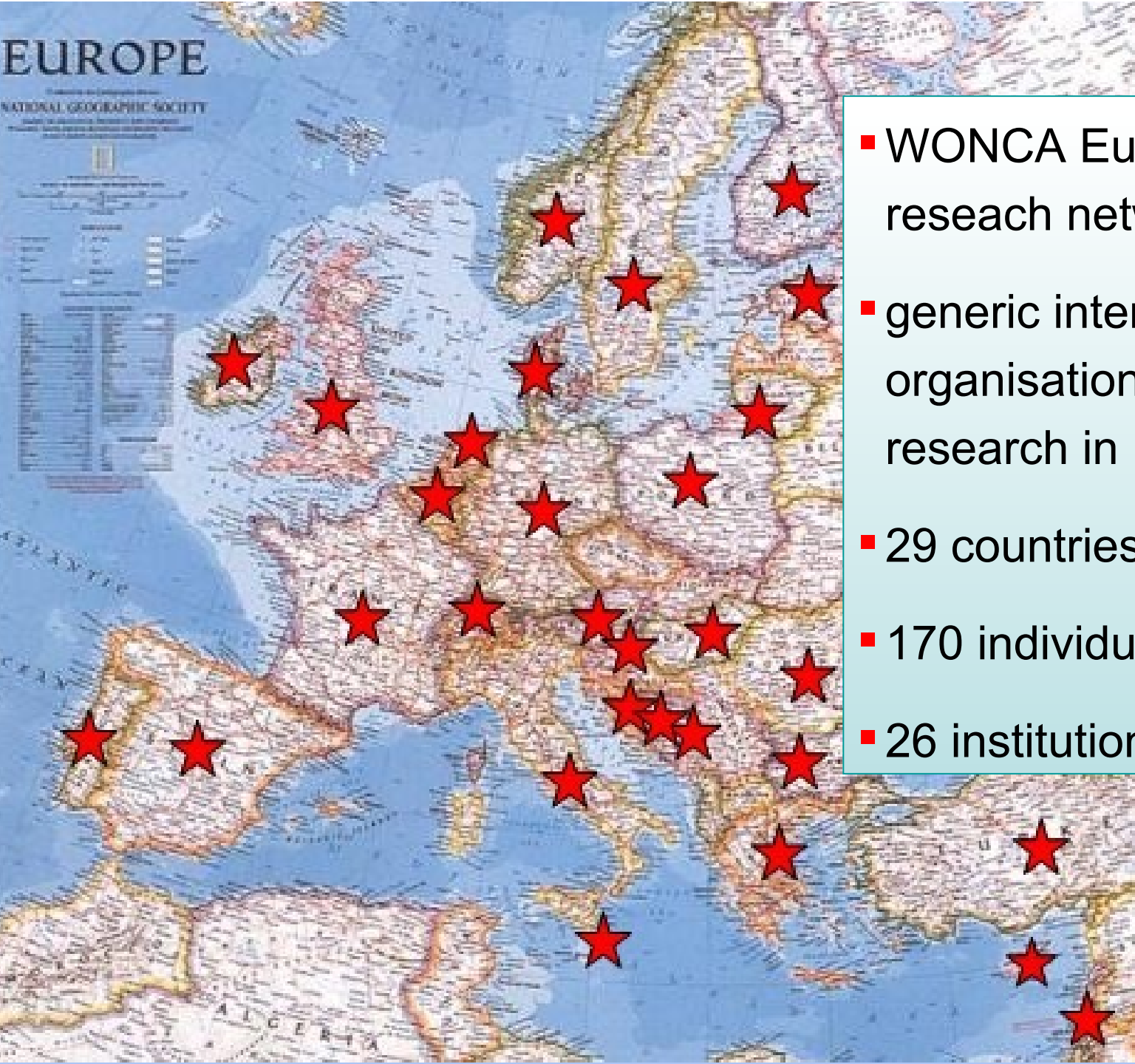
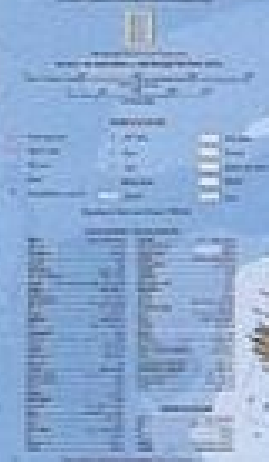
---



*EGPRN is a network organisation within  
WONCA Region Europe - ESGP/FM*

# EUROPE

NATIONAL GEOGRAPHIC SOCIETY



- WONCA Eu's research network
- generic international organisation for GP/FM research in Europe
- 29 countries
- 170 individual members
- 26 institutional members

Large differences in health care organisation

## Large differences in PC research capacity

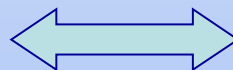
- Public health insurance (with private co-financing)
- National colleges
- International and national journals

- primary care oriented
- gate-keeping by FP with practice lists



- market oriented
- open access to specialists no inscription with FP

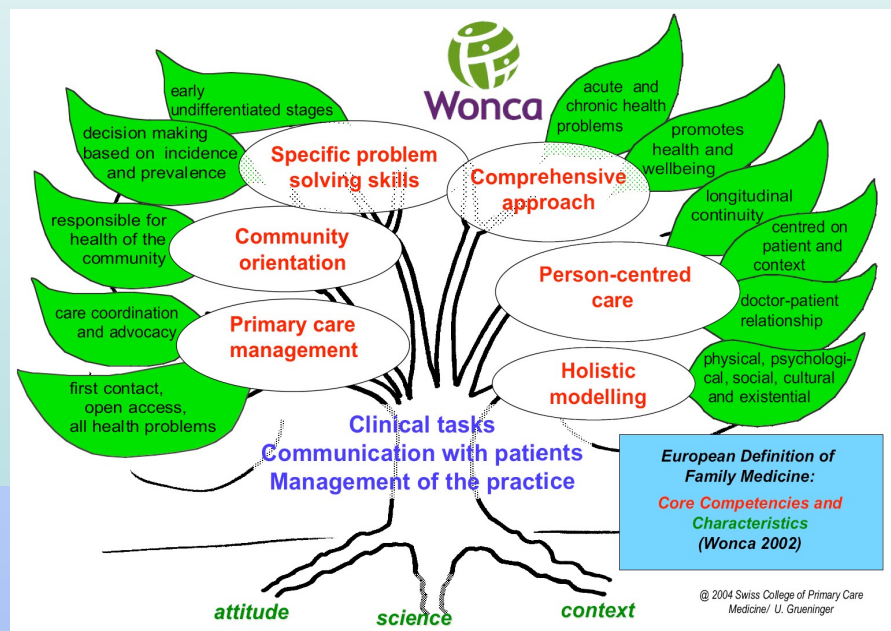
- recognition of FP
- Academic Departments of FP



- No/limited recognition
- No academic recognition

# Need for PC Research

- Most care is delivered in primary care
- Need for research in the setting where results are to be used
- Providing evidence for guidelines and tools
- Prevention, cure and care, diagnostic reasoning and therapy
- Characteristics of family medicine

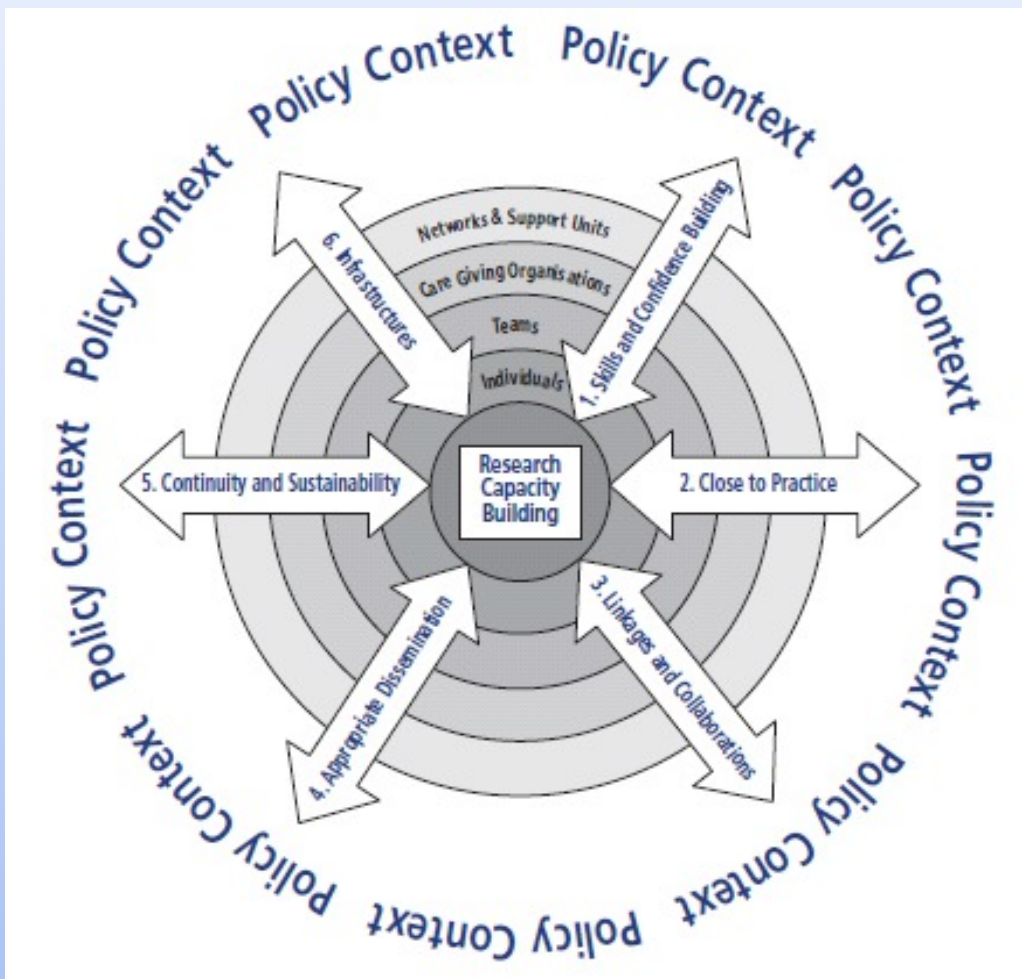


- Secretariat: Hanny Prick, Maastricht
- Executive Board (8)
- Council of national representatives (29)  
elected by national members
- Committees
  - ➔ **Educational Cee**: research courses, feed-back, mentoring
  - ➔ **Research Cee**: research agenda, collaborative research, funds
  - ➔ **Communication Cee**: website, EJGP...

EGPRN is a network organisation within  
WONCA Region Europe - ESGP/IM

## Promote and stimulate research in FM

### Research capacity building



**Exchange**  
ideas,  
methodology,  
results

**Networking**

**Learning**  
and  
**feedback**

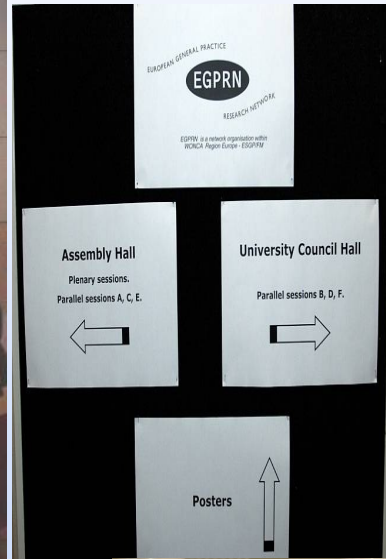
**Collaborative**  
**studies**

EGPRN is a network organisation within  
WONCA Region Europe - ESGP/IFM

- Each May & October
- **Pre-conference workshops**
- 2-day **scientific conference**
  - ➔ *Key-note speakers*
  - ➔ *Oral presentations*
  - ➔ *One slide five minutes-presentations*
  - ➔ *Guided poster sessions*
  - ➔ *Individual feedback*

**workshop style**, work in progress  
**focus on discussion and feedback**

# Meetings



## Research courses

- Formulate research questions
- Critical readings skills
- Research methods
- Presentation and writing skills



Small groups, hands-on experience, informal access

→ Course templates and materials for organisers

EGPRN is a network organisation within  
WONCA Region Europe - ESGP/IFM

- Referrals
- Home visits study,
- Obstacles in diabetes care
- Burnout in family doctors
- Motives to become a FP

Family Practice Vol. 21, No. 5 © Oxford University Press 2004, all rights reserved.  
Doi: 10.1093/fampra/cmh518, available online at [www.fampra.oupjournals.org](http://www.fampra.oupjournals.org)

Printed in Great Britain

## Setting priorities and identifying barriers for general practice research in Europe. Results from an EGPRW\* meeting

C Lionis<sup>a</sup>, HEJH Stoffers<sup>b</sup>, E Hummers-Pradier<sup>c</sup>, F Griffiths<sup>d</sup>,  
D Rotar-Pavlič<sup>e</sup> and JJ Rethans<sup>f</sup>

Lionis C, Stoffers HEJH<sup>b</sup>, Hummers-Pradier E, Griffiths F, Rotar-Pavlič D and Rethans JJ. Setting priorities and identifying barriers for general practice research in Europe. Results from an EGPRW meeting. *Family Practice* 2004; **21**: 587–593.

EGPRN is a network organisation within  
WONCA Region Europe - ESGP/IFM

- Evidence base of the European definition
- Research needs and evidence gaps
- Improving GP research in low capacity countries



Eva Hummers-Pradier, Martin B  
Christos Lionis, Lieve Peremans,  
Pinar Topsever, Mehmet Ungan,

Eva Hummers-Pradier, Martin Beyer, Patrick Chevallier, Sophia Eilat-Tsanani,  
Christos Lionis, Lieve Peremans, Davorina Petek, Imre Rurik, Jean Karl Soler, Henri E.J.H. Stoffers,  
Pinar Topsever, Mehmet Ungan, Paul van Royen

## *Added value of EGPRN*

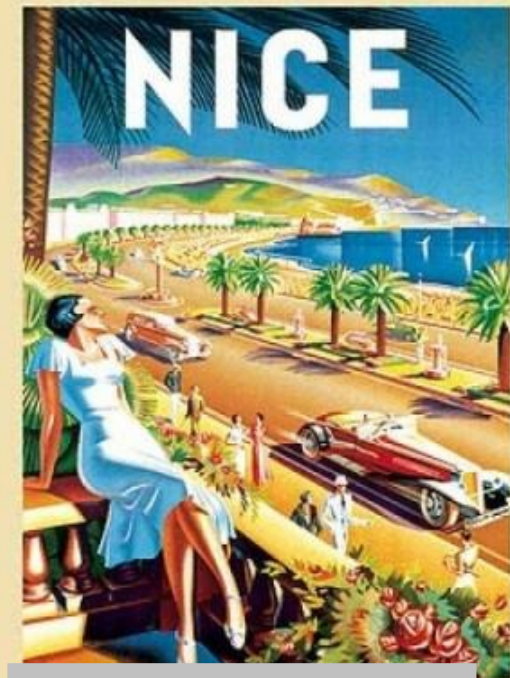
EGPRN is a network organisation within  
WONCA Region Europe - ESGP/FM

- Learning environment for FP researchers
  - Platform to discuss and present
  - Sustainable network of friends
- 
- ➔ Development of academic primary care
  - ➔ Capacity building
  - ➔ International competitiveness and mobility
  - ➔ Visibility of European research in GP/FM

**[www.egprn.org](http://www.egprn.org)**

**Come ...**

Zürich, Switzerland deadline: June 30, 2010



France, May 2011



Krakow, Poland, Oct. 2011